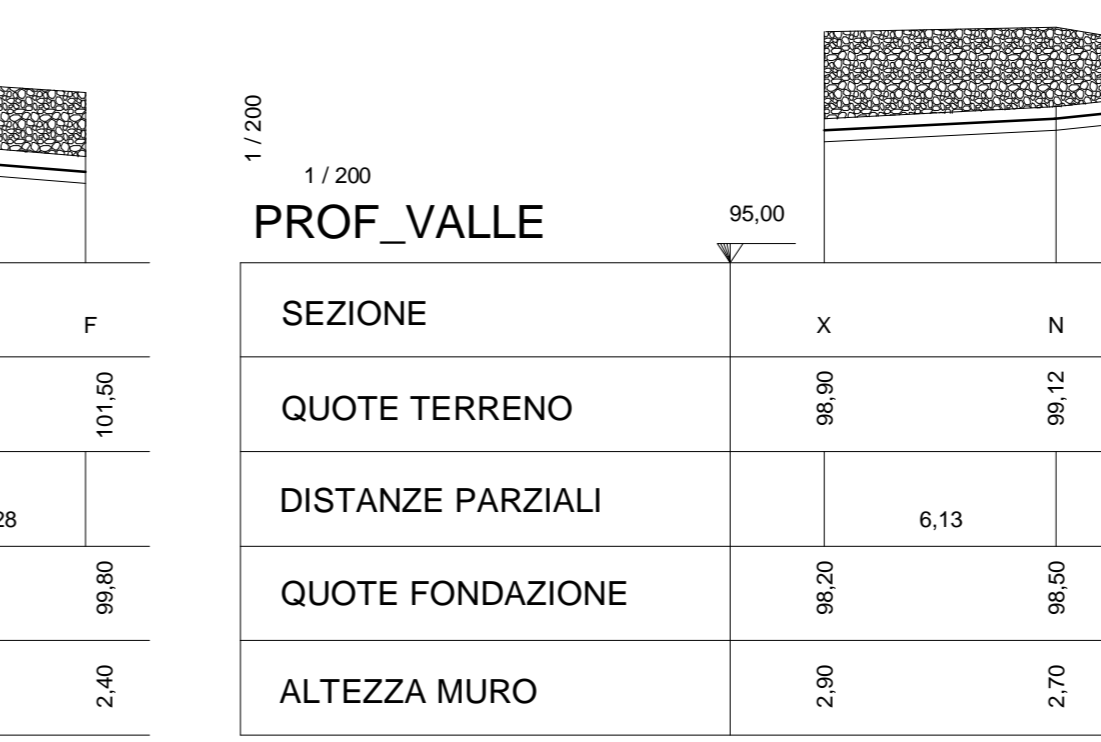
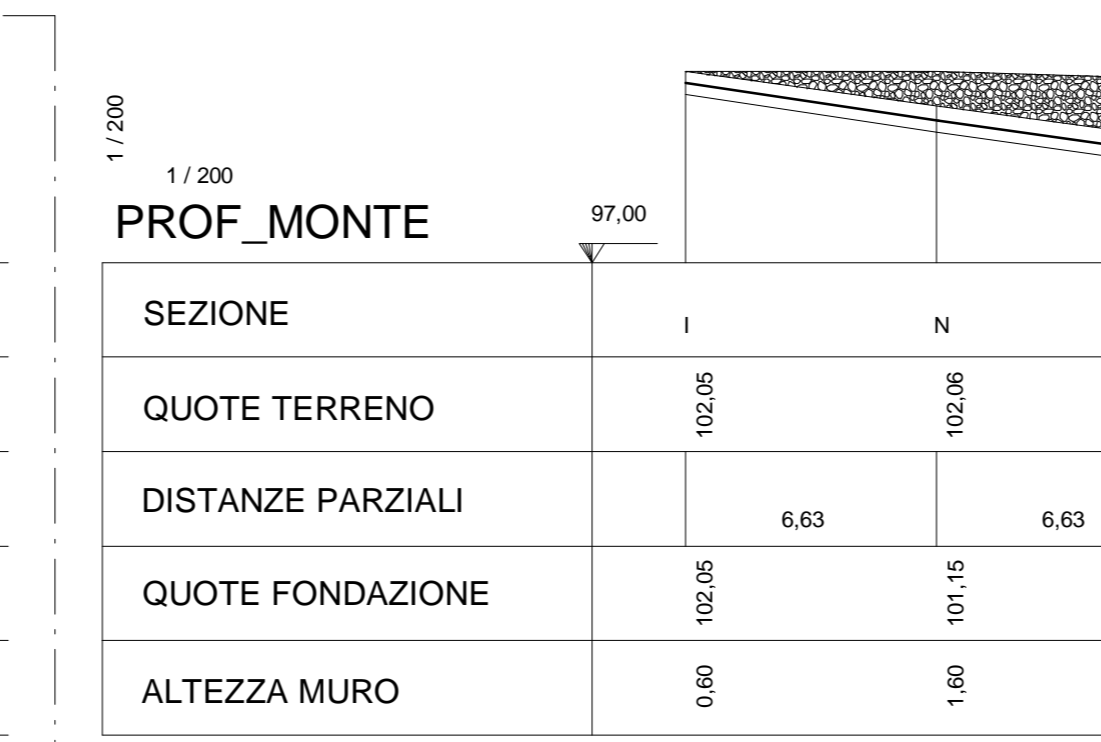
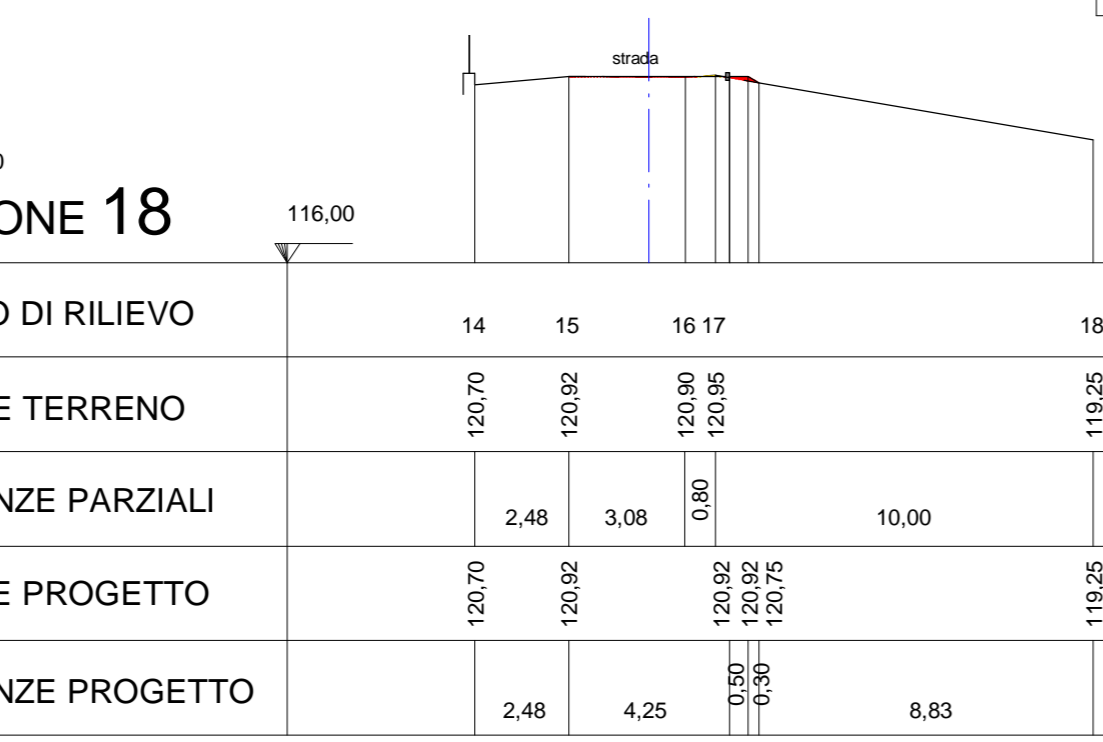
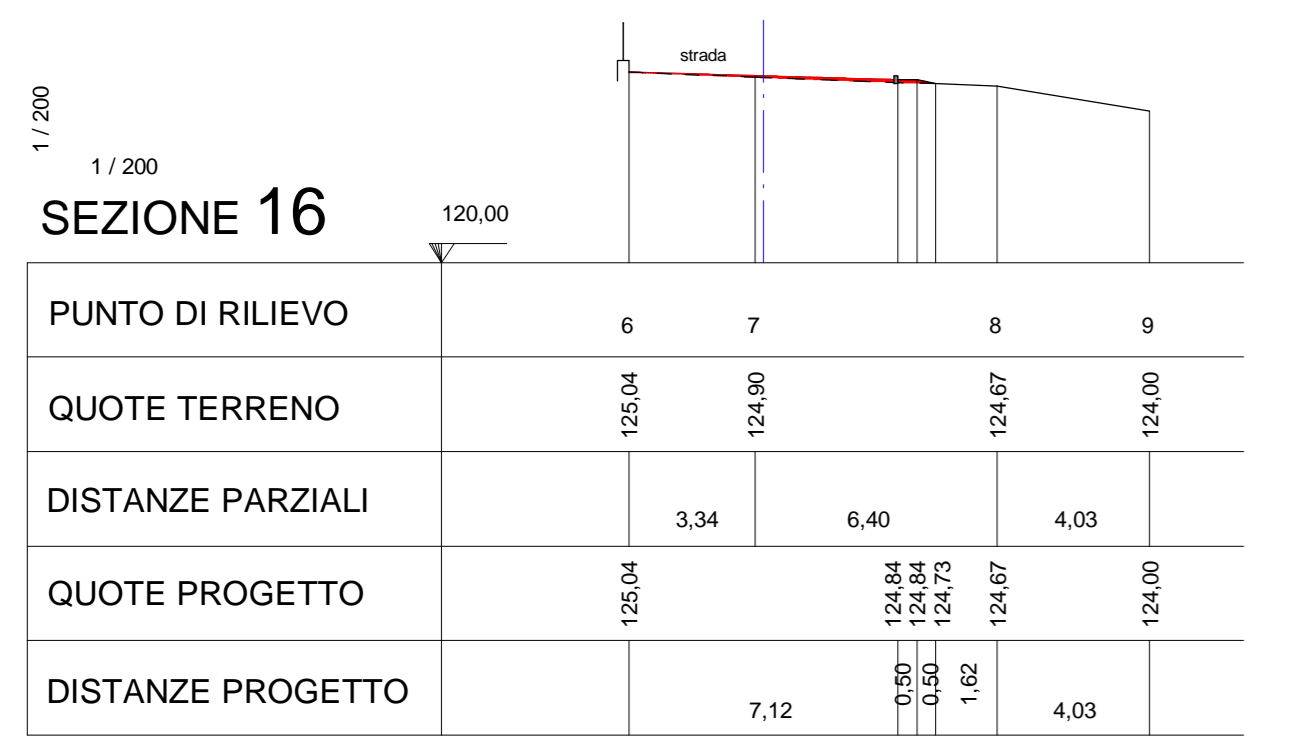
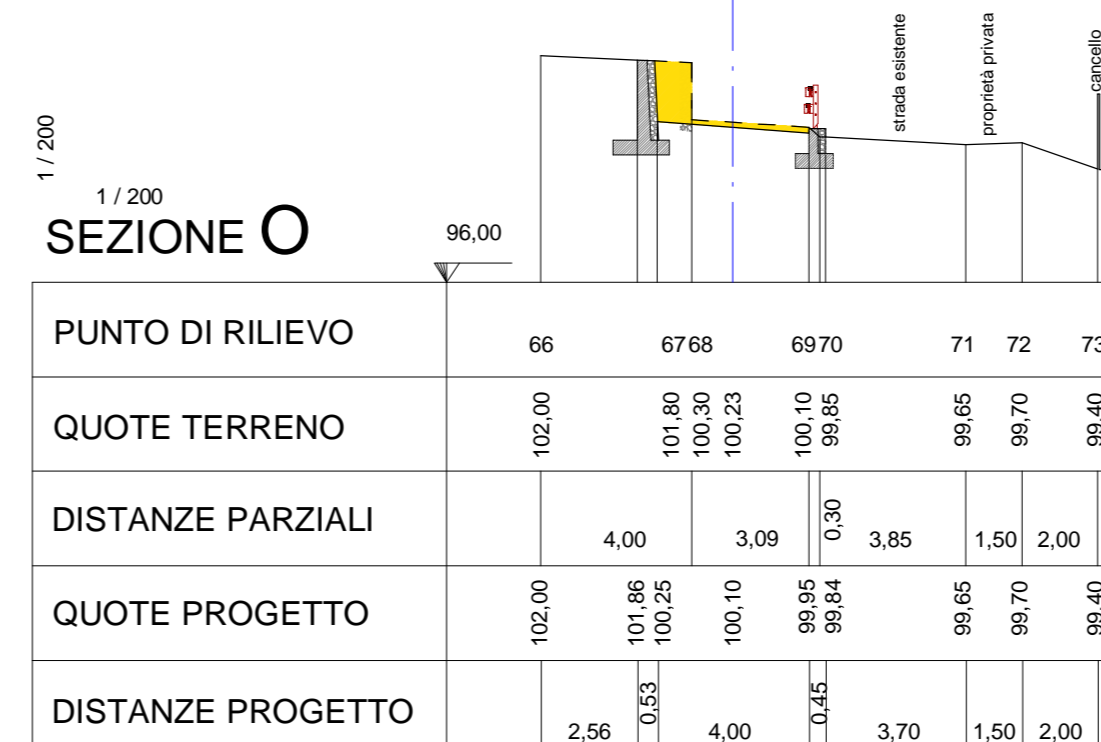
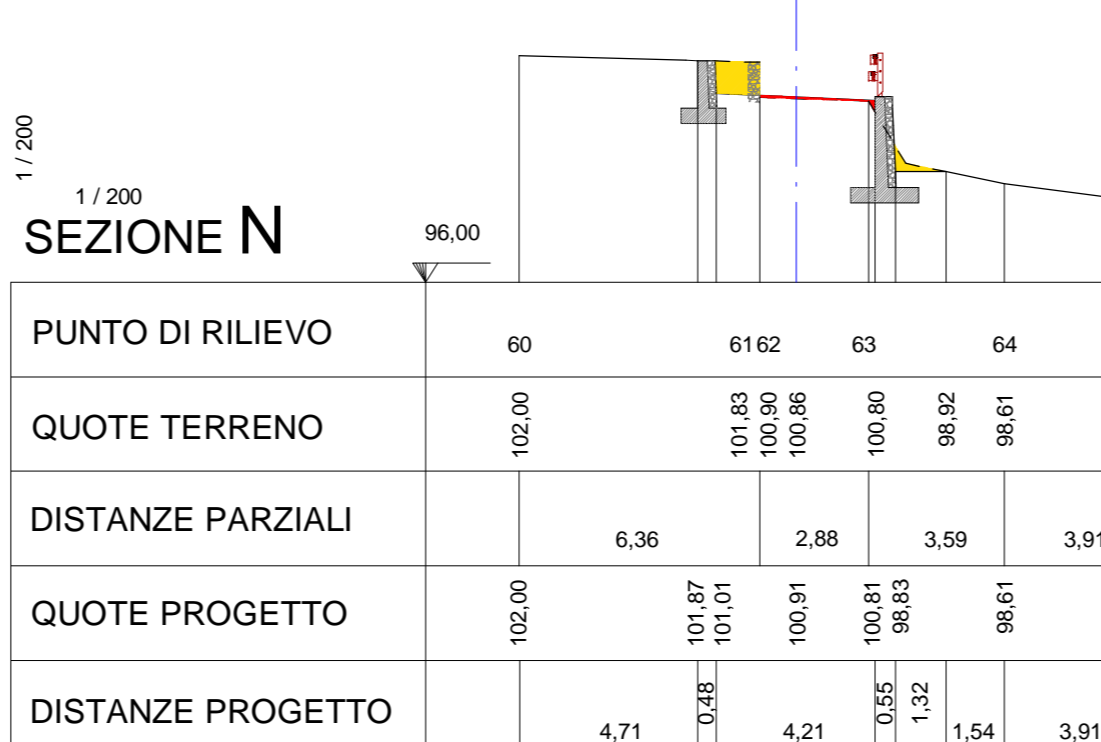
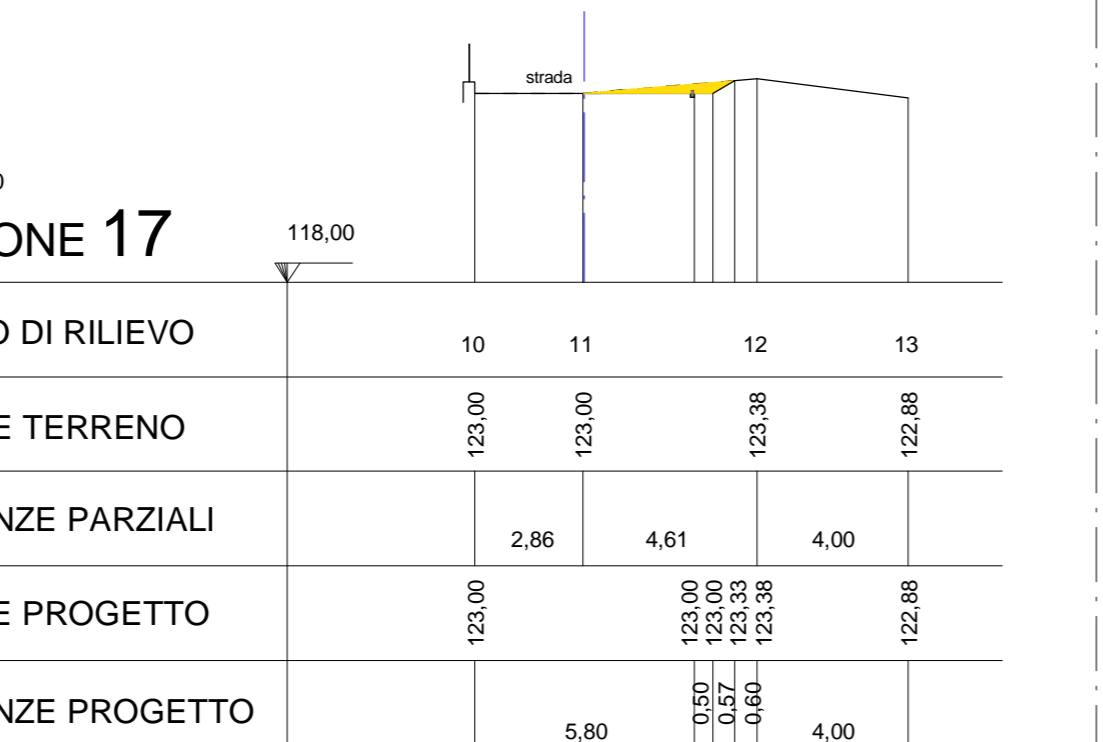
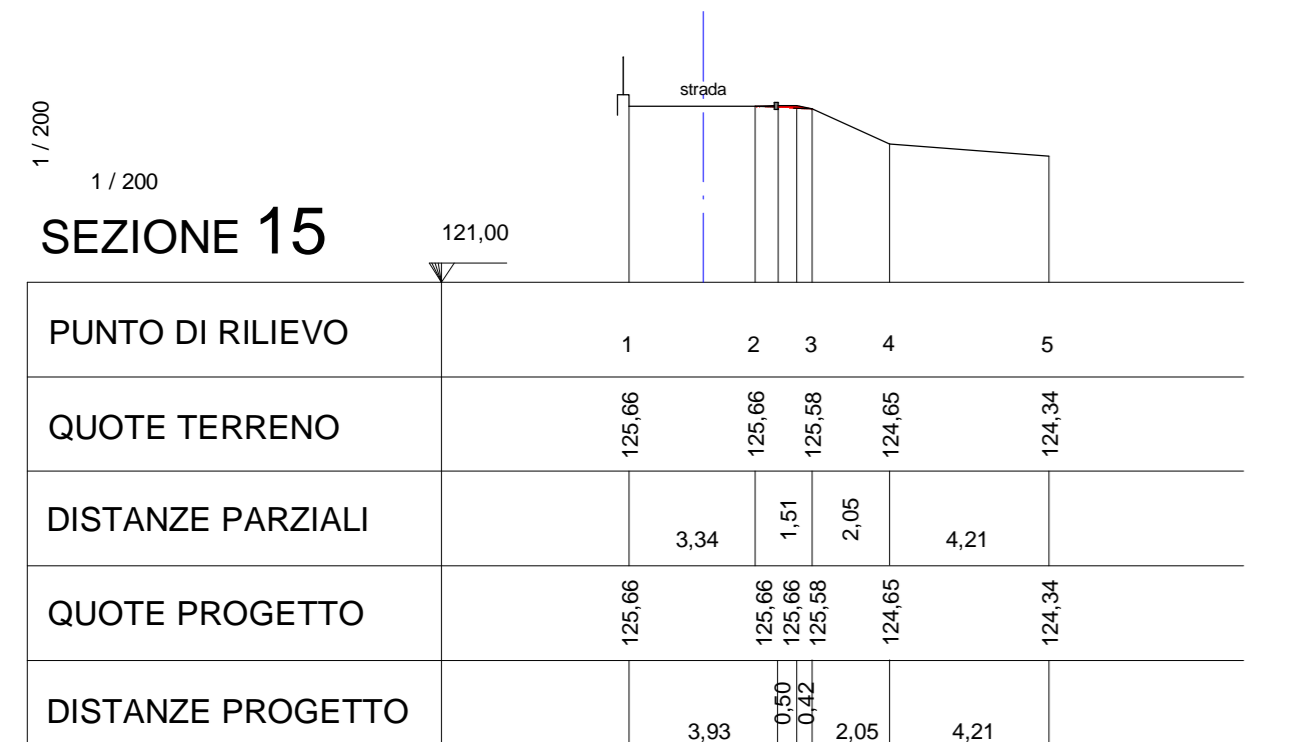


LEGENDA

- Scavi/Livellamenti
- Riparti/Livellamenti
- Sez. Attuale
- Sez. Progetto
- Taglio Pianta

Intervento 3



Intervento 4

Intervento 5

STUDI DI INGEGNERIA
ing. Angelo Riz
 56127 Pisa, via S. Marta, 23
 tel. 050 571355 fax, 1782232594
 e-mail: riz.ing@tiscali.it

COMUNE DI CAPOLIVERI
 Provincia di Livorno

LAVORI DI RIQUALIFICAZIONE DELLA STRADA COMUNALE DI "FONTE ALLE ROSE"

PROGETTO DEFINITIVO

SEZIONI (Interventi 3 - 4 - 5)
 PROFILI (Muri di contenimento - Intervento 5)

aggiornamenti -Rev. 01 scala 1:200
 data ottobre 2014