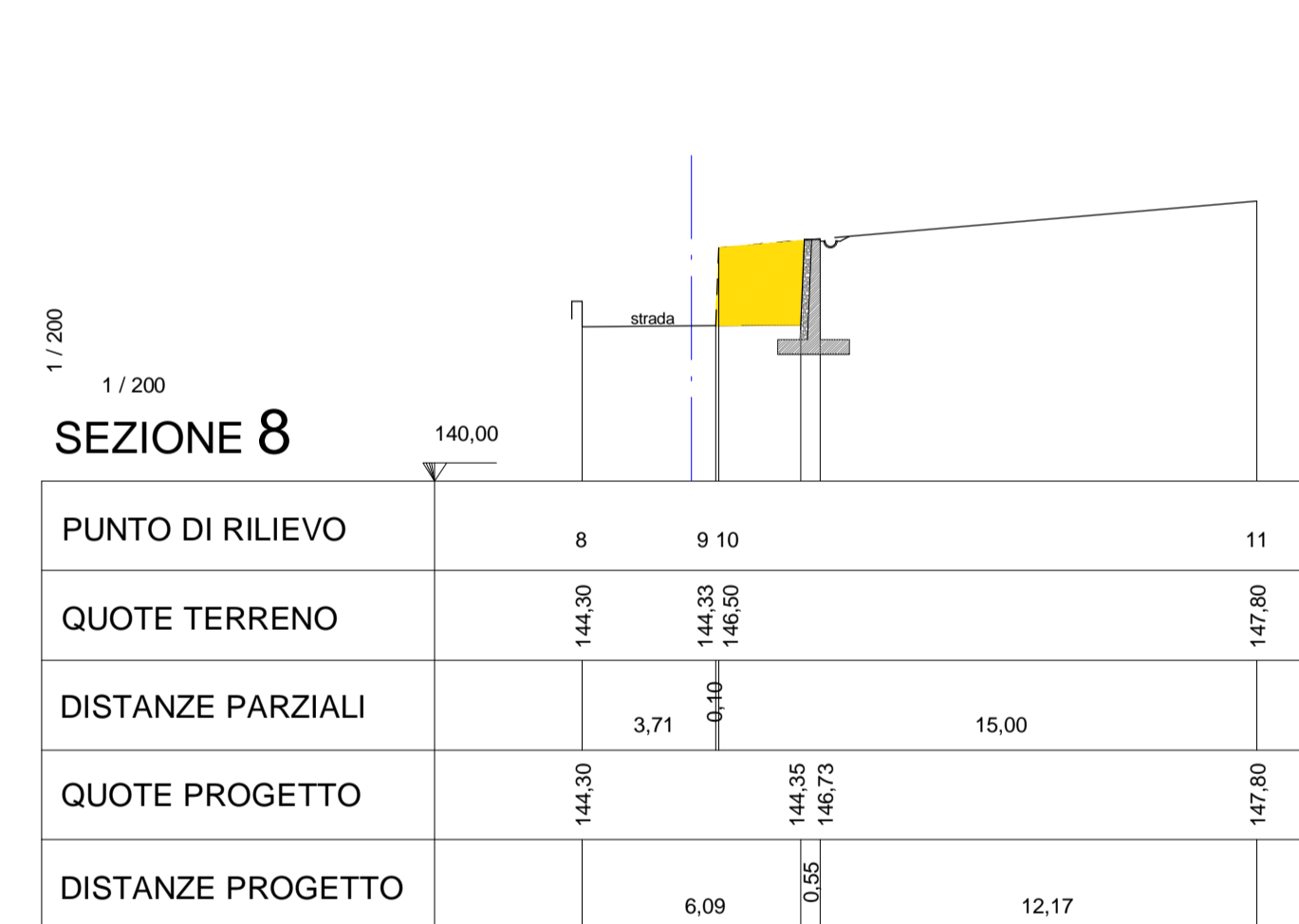
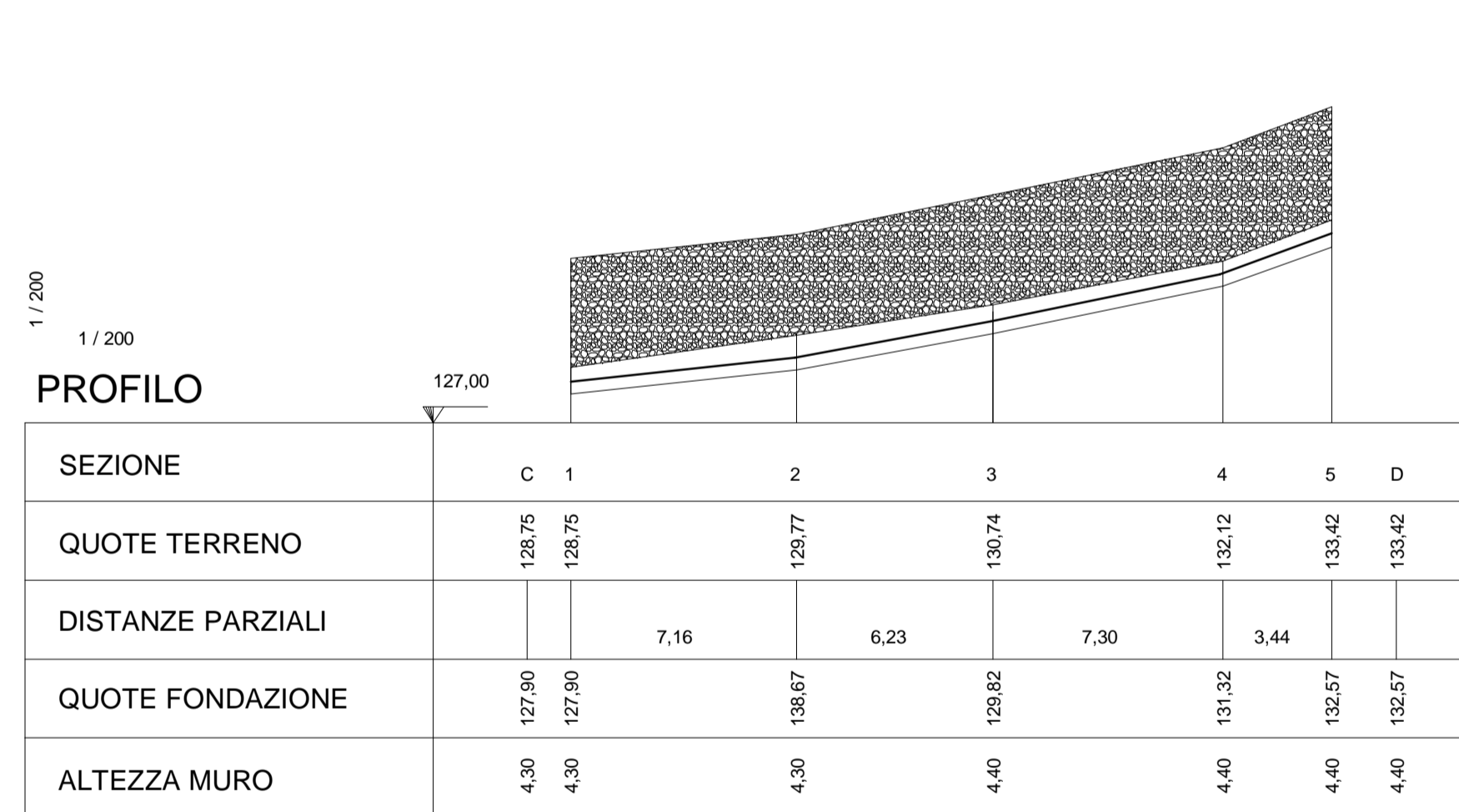
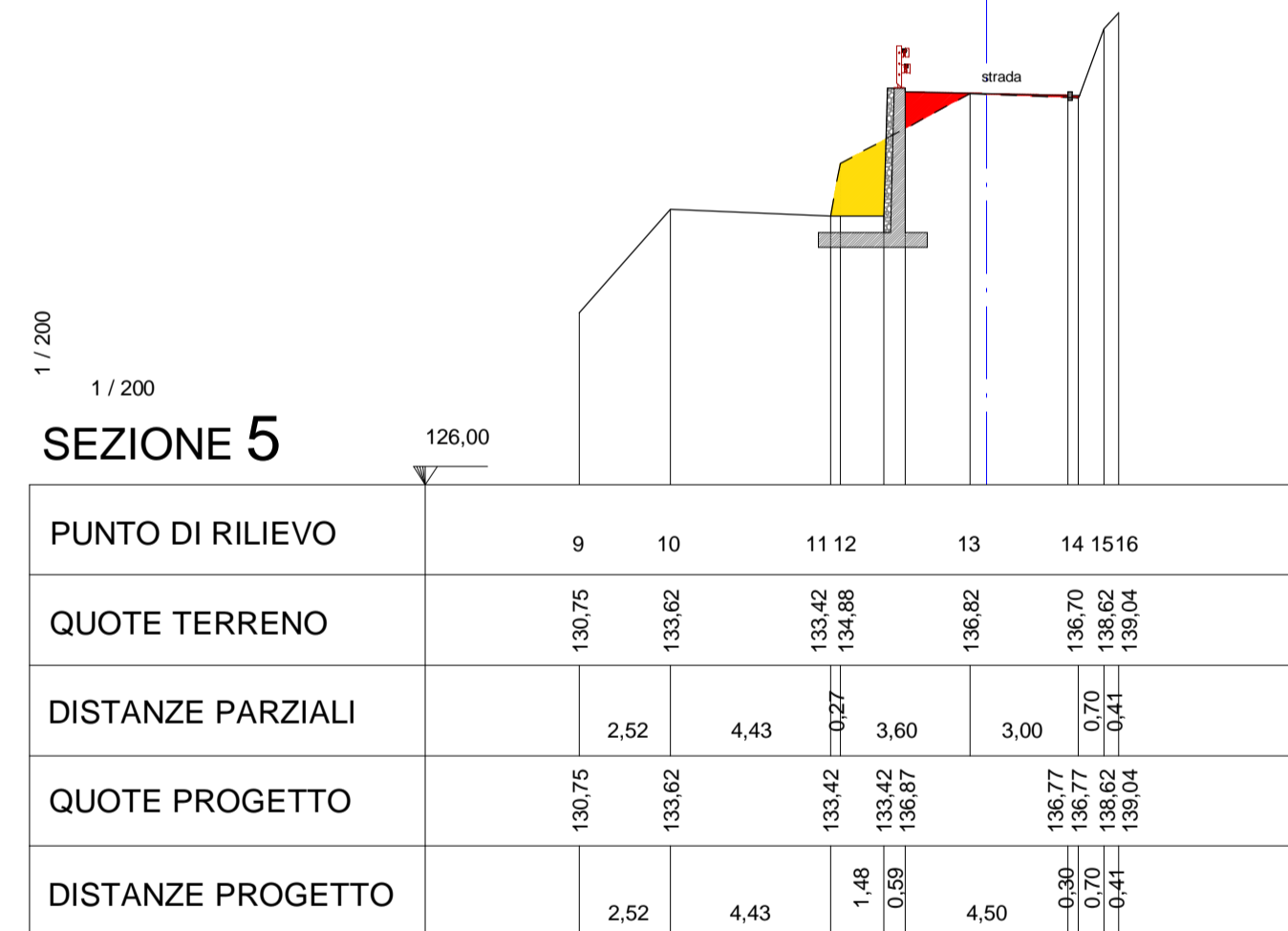
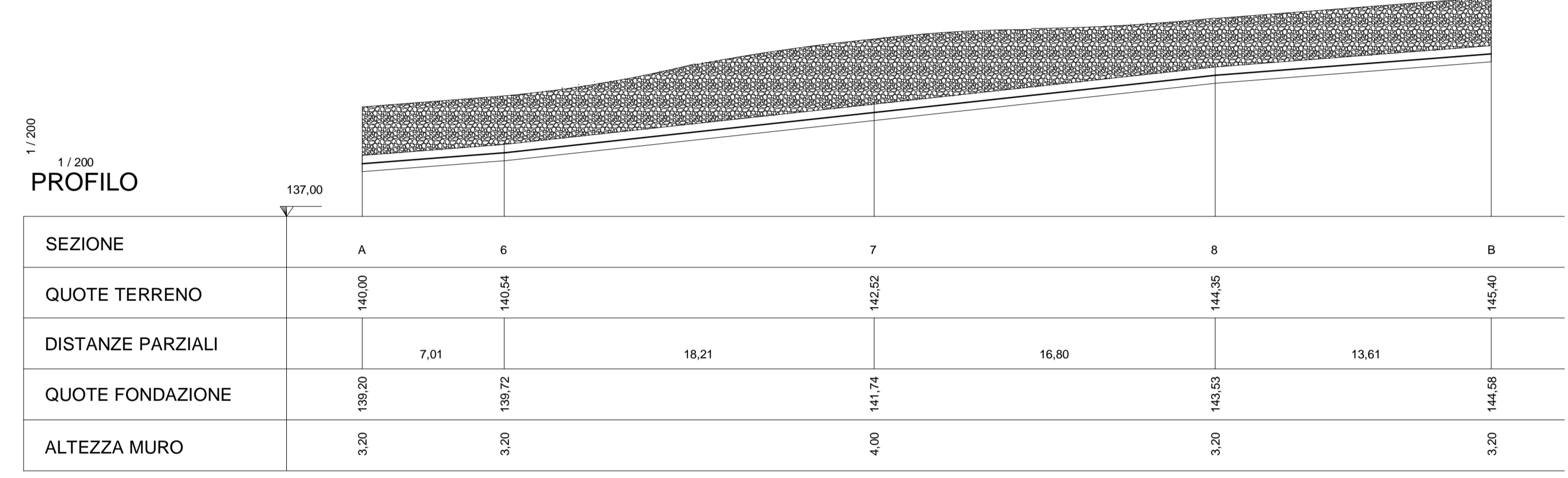
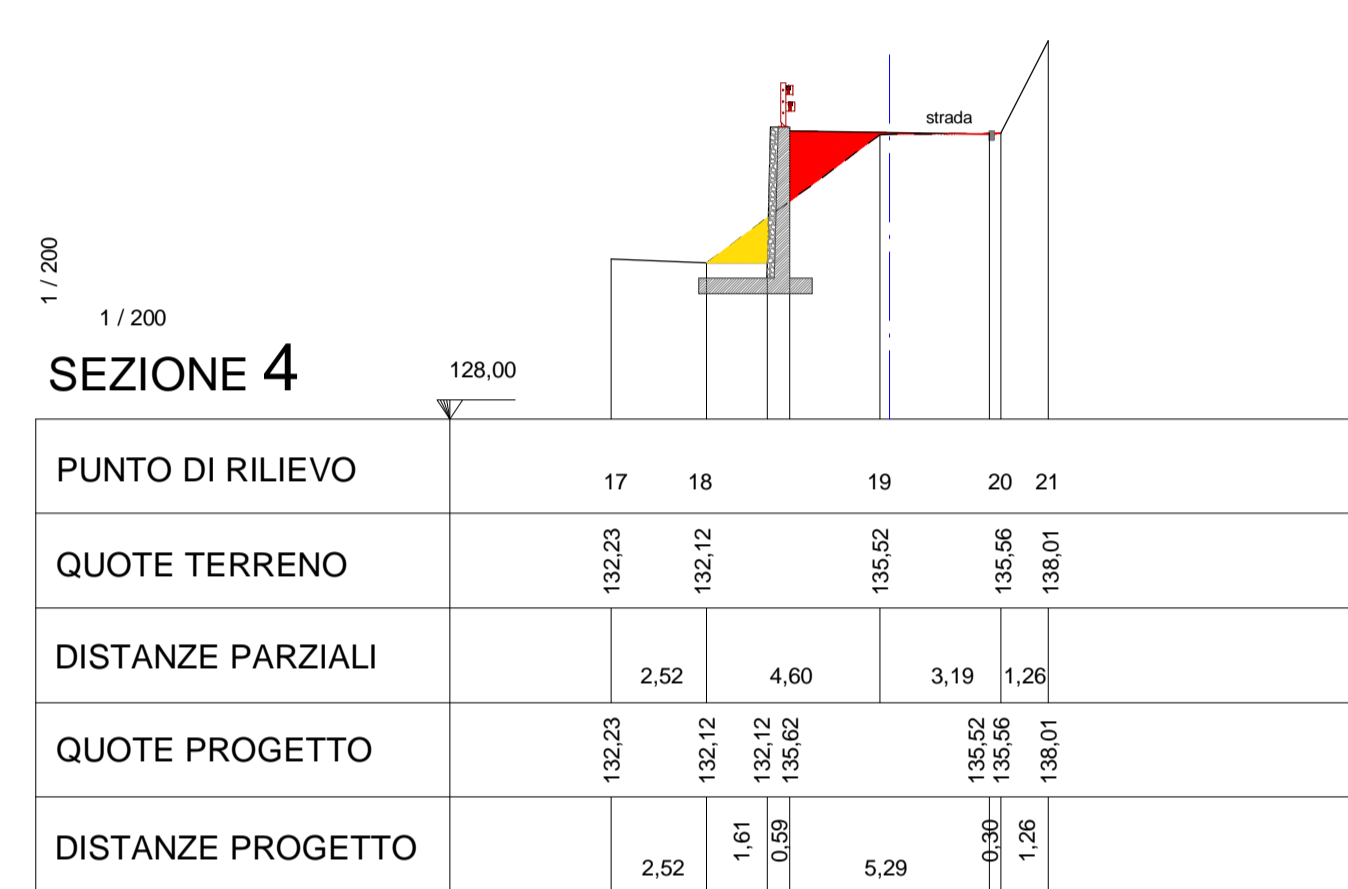
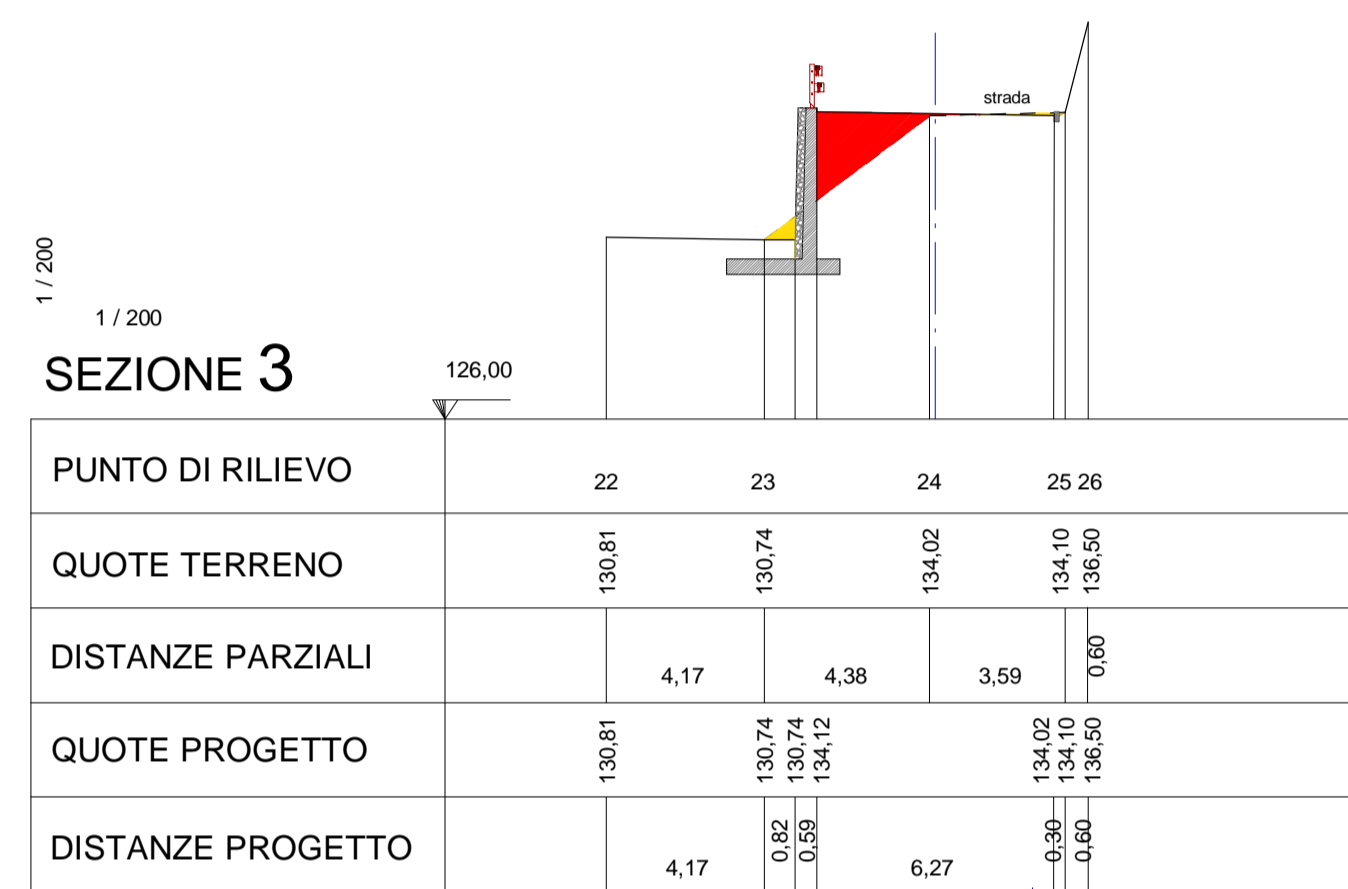
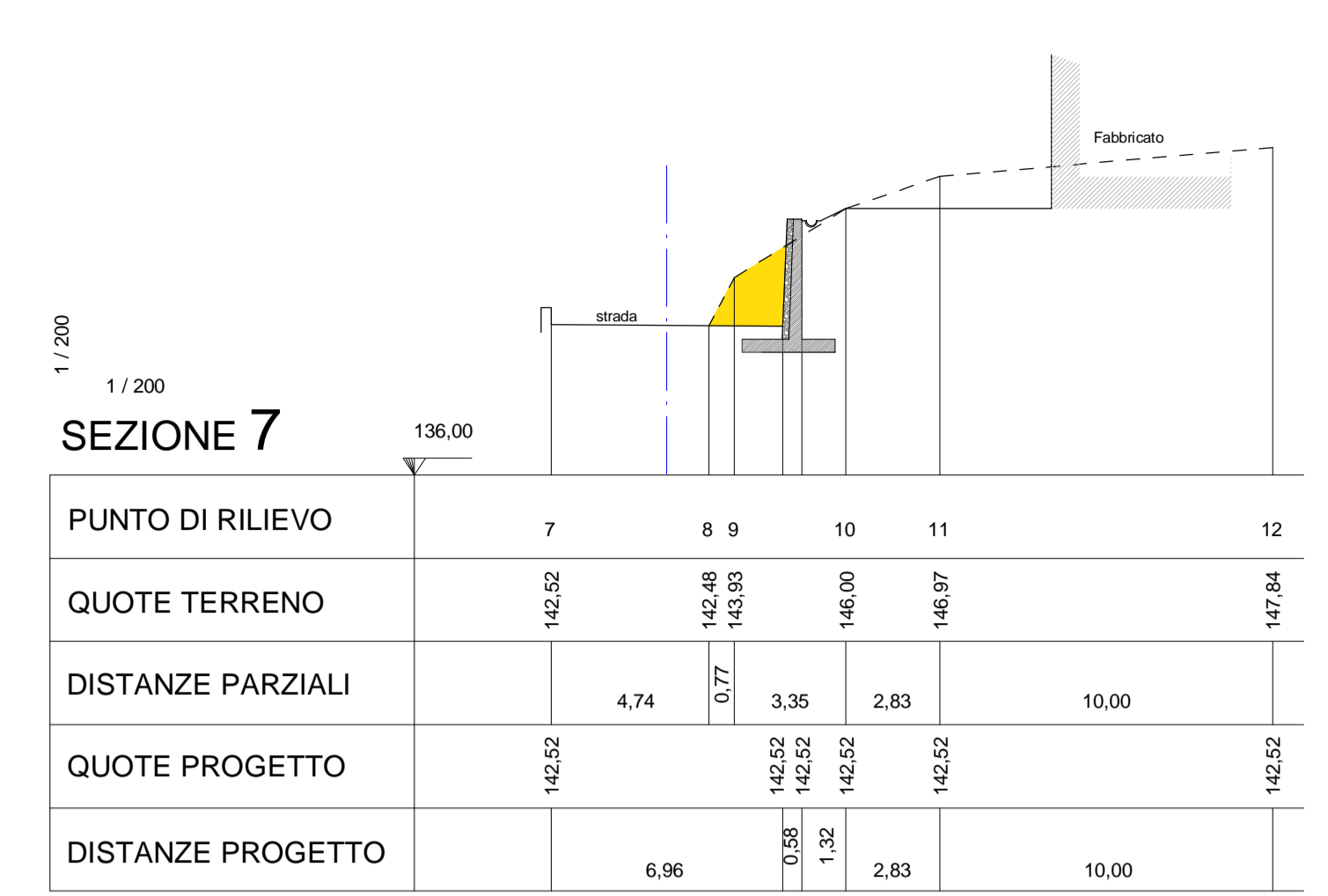
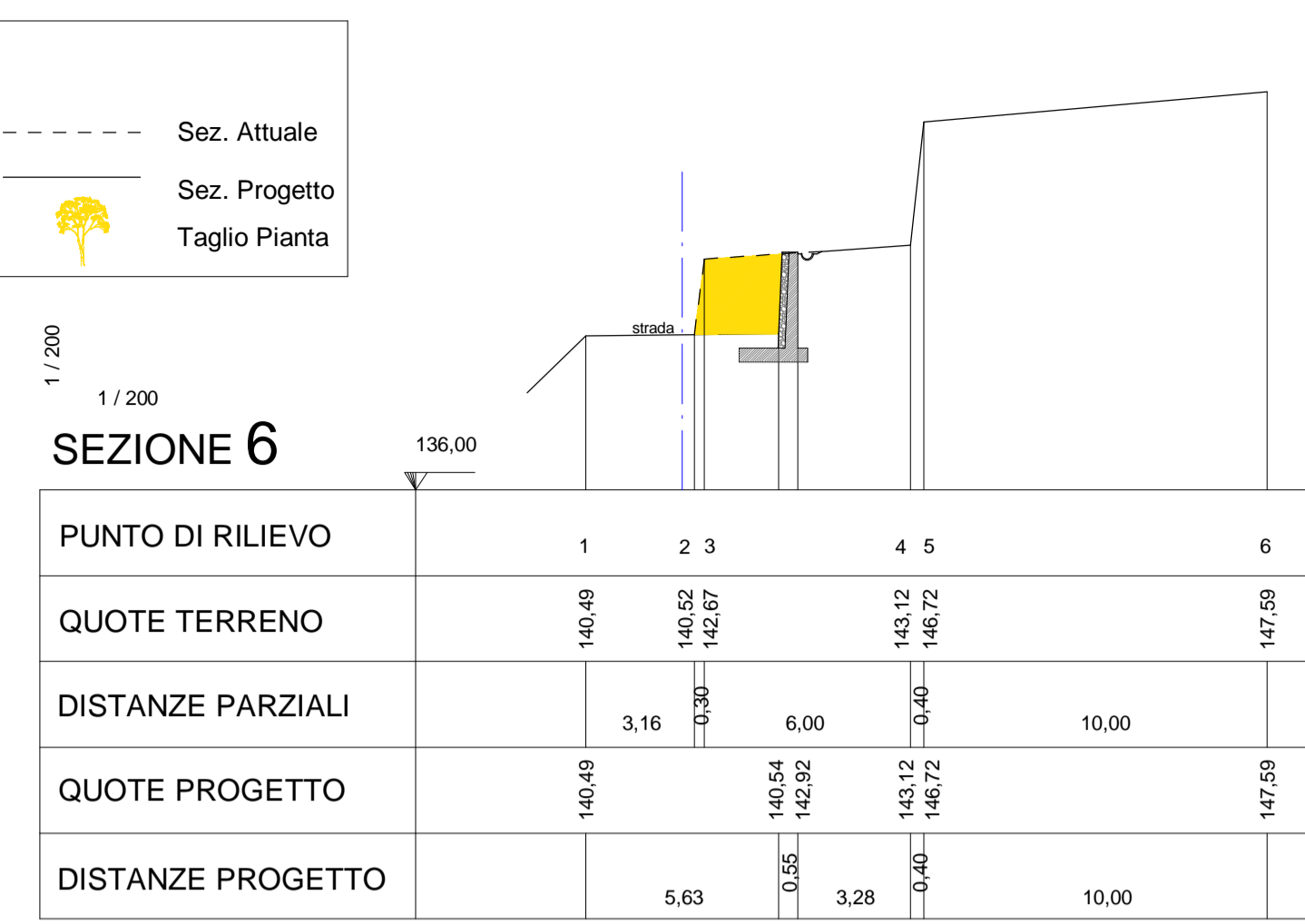


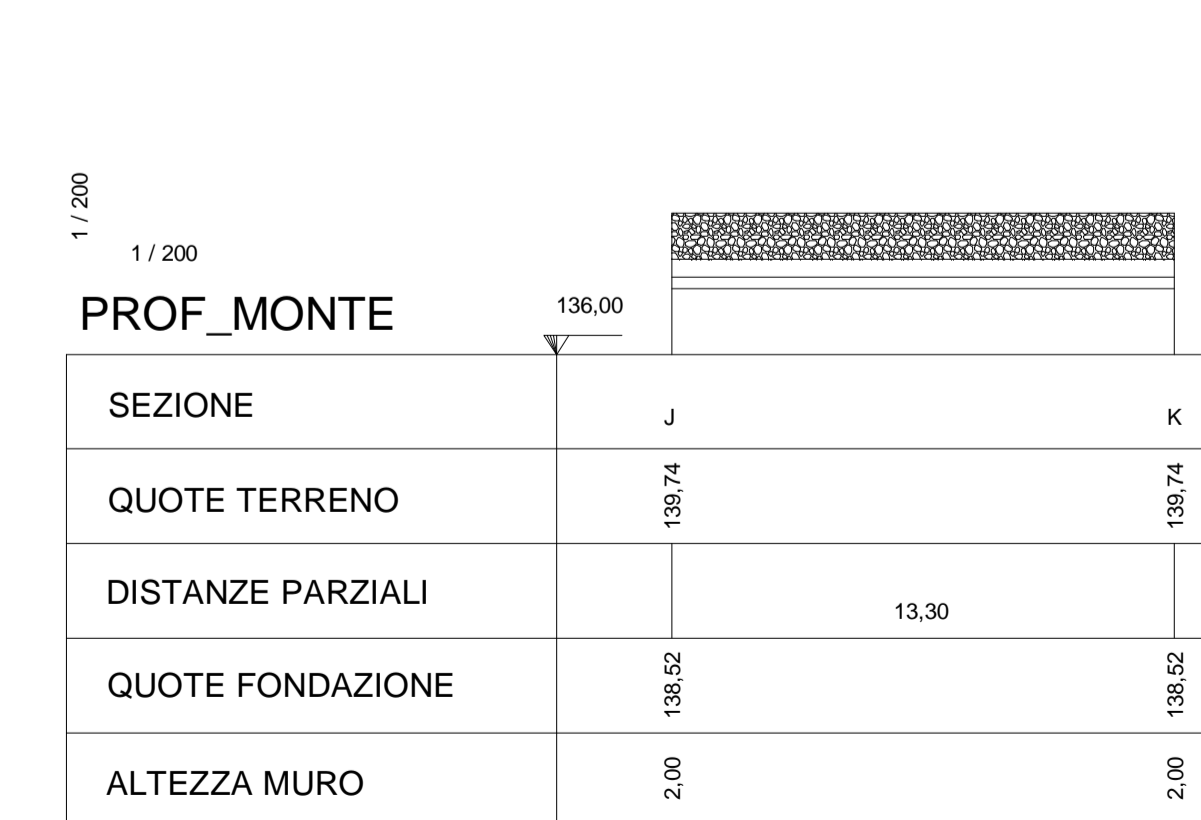
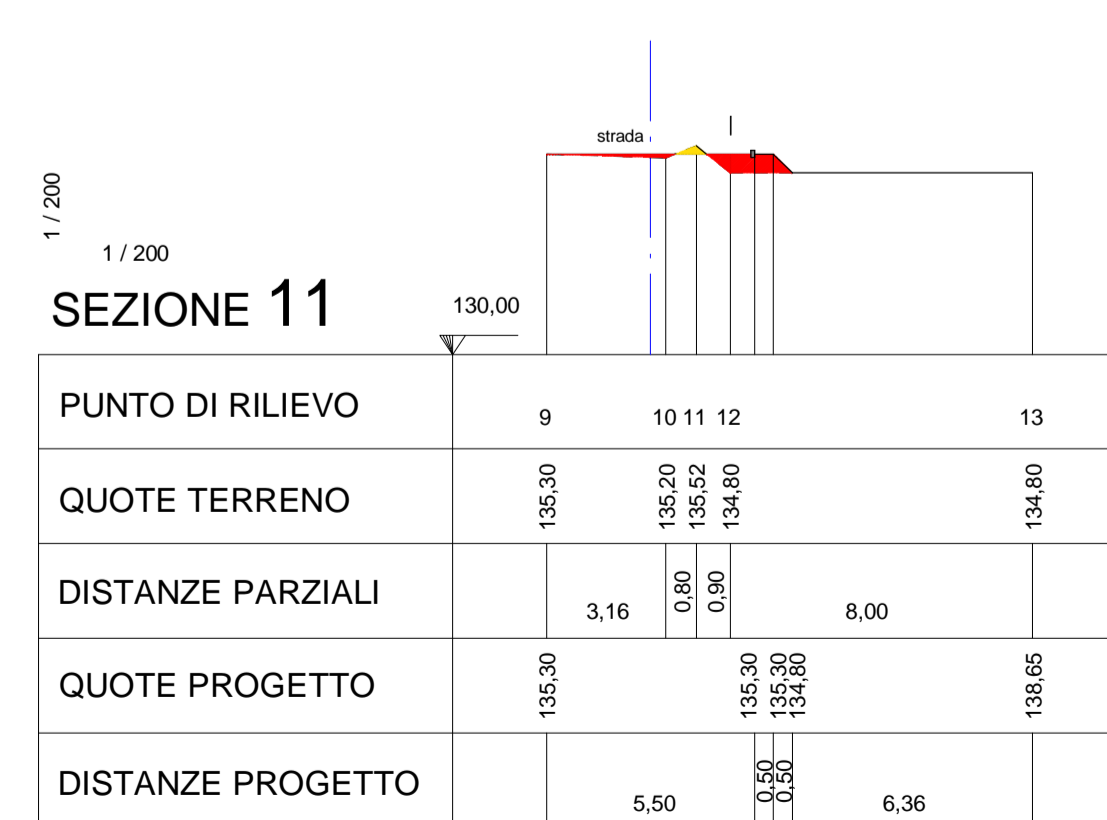
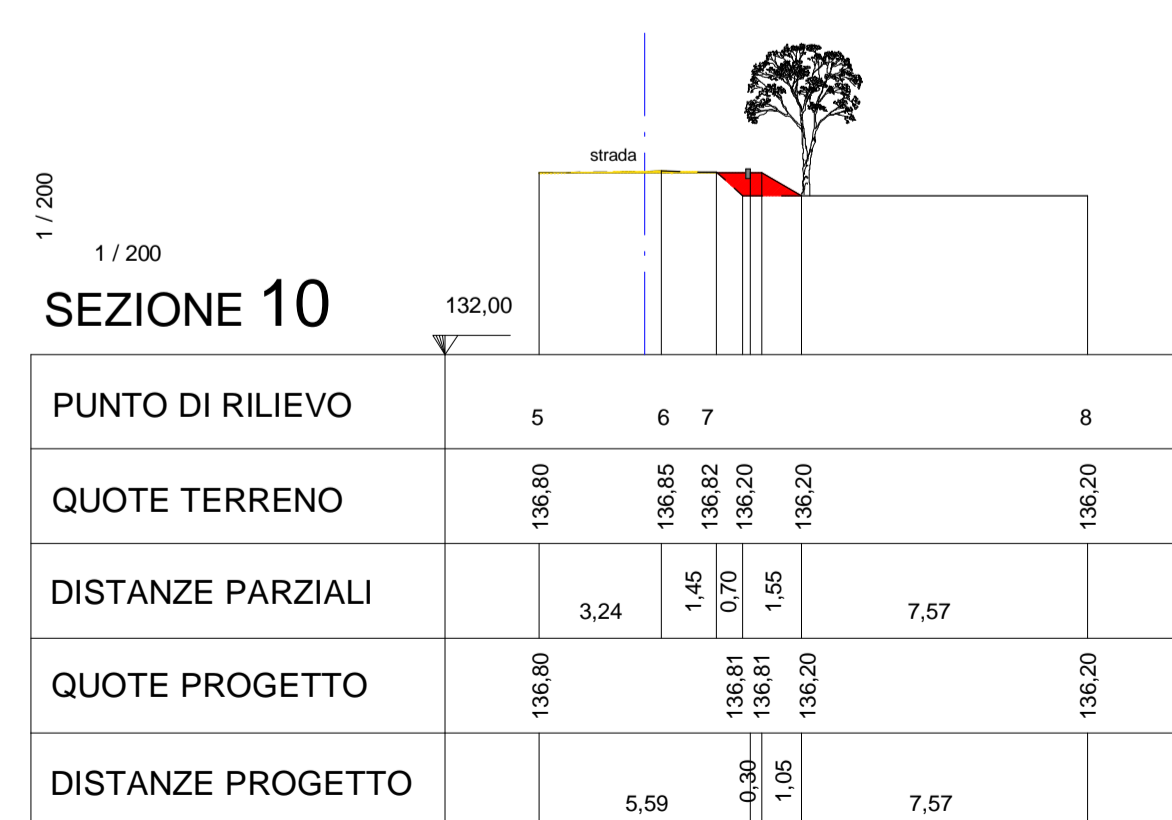
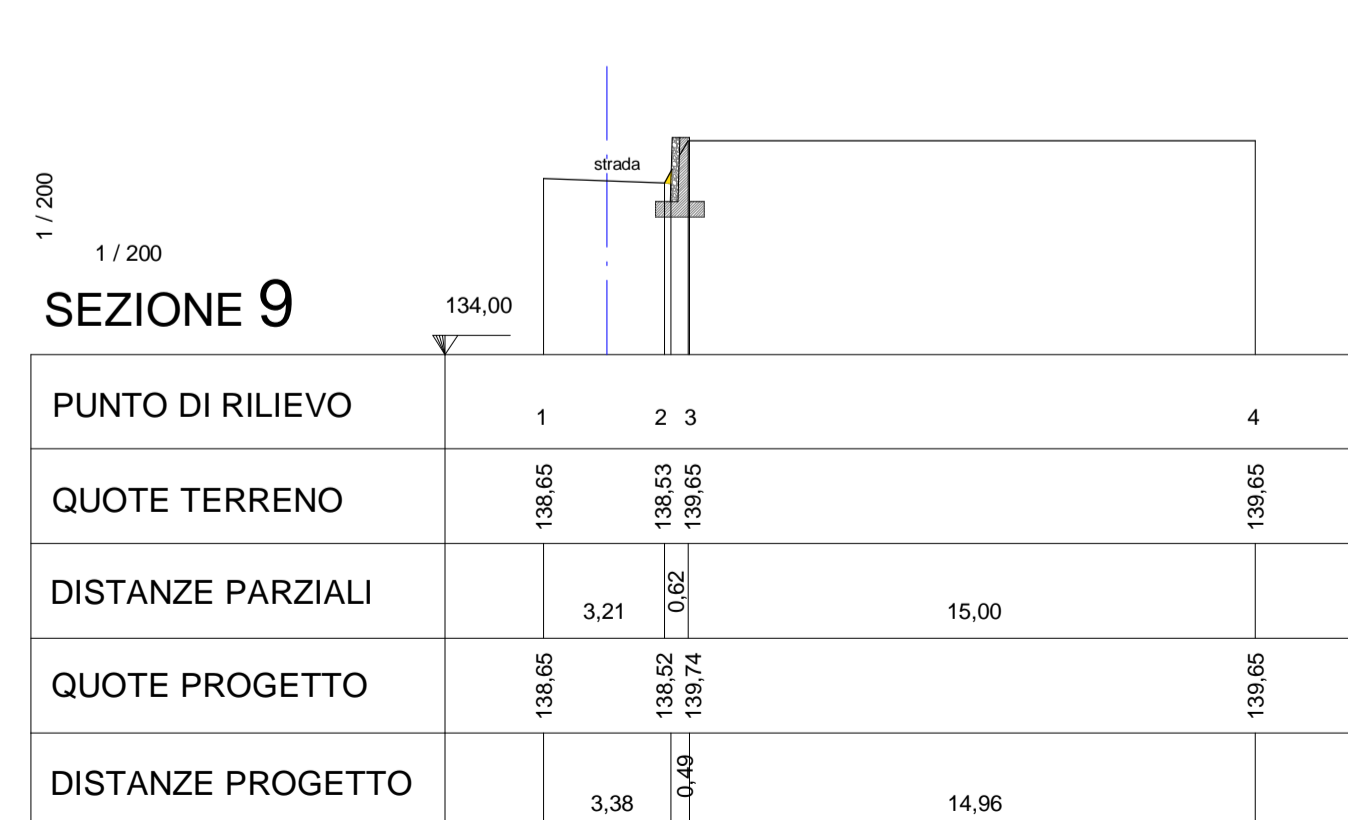
**LEGENDA**

- Scavi/Livellamenti
- Riperti/Livellamenti
- Sez. Attuale
- Sez. Progetto
- Taglio Pianta



intervento 0

intervento 1



intervento 2

**STUDI DI INGEGNERIA**  
ing. Angelo Riz  
56127 Pisa, via S.Marta, 23  
tel. 050 571355 fax. 178223294  
e-mail riz.ing@tiscali.it

**COMUNE DI CAPOLIVERI**  
Provincia di Livorno

**PROGETTO DEFINITIVO**

LAVORI DI RIQUALIFICAZIONE DELLA  
STRADA COMUNALE DI "FONTE ALLE ROSE"

SEZIONI (Interventi 0 - 1 - 2)  
PROFILI (Muri di contenimento - Interventi 0- 1- 2)

aggiornamenti -Rev. 01 scala 1:200  
data ottobre 2014

5